

#### DETTAGLI

- Bottoni a pressione
- Taschino sul petto

#### TAGLIE

S ÷ 5XL  
Slim Fit

#### COLORE

00 Bianco

#### TESSUTO

100% cotone  
185 g / m<sup>2</sup>



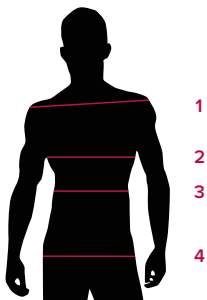
Le misure indicate si riferiscono alle taglie **S** per i capi femminili, **L** per i capi maschili. Per i capi a taglia unica le misure indicate sono effettive.

#### COLORI DISPONIBILI



00 Bianco

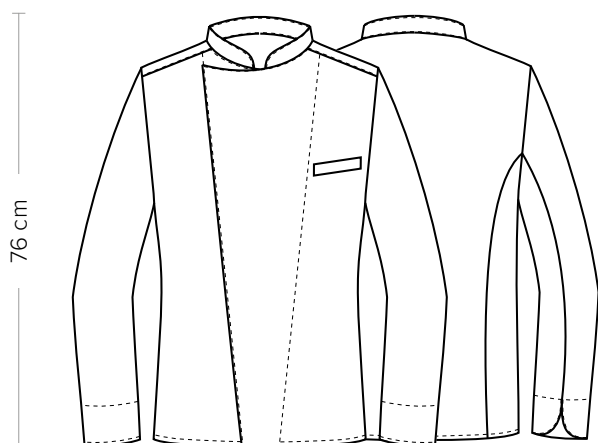
TABELLE TAGLIE  
E CORRISPONDENZE



#### TABELLA ST-G1 SLIM FIT

TAGLIA	XS	S	M	L	XL	XXL	XXXL	4XL	5XL
<b>1 - SPALLE</b>	44	45	46	47	49	51	53	55	57
<b>2 - TORACE</b> circonferenza	92-96	96-100	101-104	105-111	112-116	117-124	125-132	133-142	143-152
<b>3 - VITA</b> circonferenza	80-84	84-88	89-92	93-99	100-106	107-116	117-126	127-138	139-148
<b>4 - BACINO</b> circonferenza	93-97	97-101	102-105	106-111	112-117	118-125	126-133	134-143	144-153

**GUIDA ALLE TAGLIE** **1)** Prendere le misure anatomiche (corpo con abbigliamento intimo) senza stringere mantenendo ben teso il metro. **Nota:** nel caso vogliate indossare dei camici già con dell'abbigliamento sotto prendete le misure già abbigliati. **2)** Nel caso tra le misure prese vi fosse una misura a cavallo fra 2 taglie vi consigliamo di prendere quella più grande. **3)** Le misure della tabella sono espresse in centimetri.



#### DETAILS

- Press studs
- Breast pocket

#### SIZES

S ÷ 5XL  
Slim Fit

#### COLOURS

00 White

#### FABRIC

100% cotton  
185 g / m<sup>2</sup>



The measures indicated refer to sizes **S** for women, **L** for men. For one-size-fits-all garments, the measurements indicated are effective.

#### AVAILABLE COLOURS



00 White

SIZE TABLES  
AND CORRESPONDENCES

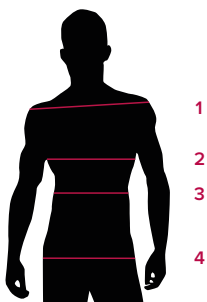


TABLE ST-G1 SLIM FIT									
SIZE	XS	S	M	L	XL	XXL	XXXL	4XL	5XL
<b>1 - SHOULDERS</b>	44	45	46	47	49	51	53	55	57
<b>2 - CHEST</b> circumference	92-96	96-100	101-104	105-111	112-116	117-124	125-132	133-142	143-152
<b>3 - WAIST</b> circumference	80-84	84-88	89-92	93-99	100-106	107-116	117-126	127-138	139-148
<b>4 - HIPS</b> circumference	93-97	97-101	102-105	106-111	112-117	118-125	126-133	134-143	144-153

**SIZE GUIDE** **1)** Take the anatomical measurements (body with underwear) without tightening, keeping the measuring tape taut. Note: in case you want to wear of the gowns already with the clothing underneath take the measurements already dressed. **2)** If there is a measure between 2 sizes between the measurements taken, we advise you to take the bigger one. **3)** The measurements in the table are expressed in centimeters.