

F-300H
Instruction Manual

DIGITAL FACIAL STEAMER

IMPORTANT NOTICE

• Before using the steamer with a customer, it is very important to perform two entire cycles. Do not use it with a patient!

• It is advisable to wash the new cup vessel thoroughly before its first use, with clean water only.

WARNING

• Do not use any substance other than distilled water. Take care when using essential oils or herbs, so as not to contaminate the water used for steaming.

• NEVER point the vapor jet directly in the face of a customer.

• NEVER use the steamer unit in humid or poorly ventilated environments.

• NEVER use the steamer outdoors.

• NEVER attempt to open the steamer casing/ housing by yourself.

• If the power cord was destroyed, please ask a professional to service and replace it to avoid hazards, or contact the dealer for service.

• Do not let the steamer run dry. If it does, the warranty is voided.


EC-DECLARATION OF COMPLIANCE

This product meets the following requirements:

1. Conditions set out in the Low Voltage Directive: 2006/95/EC

2. Conditions set out in the Electromagnetic Compatibility Directive: 2004/108/EC

RECYCLING

 Whenever any of our electrical products or their presentation packaging bear this symbol, it means that these products should not be treated as conventional household waste in Europe. To ensure proper treatment of this waste, dispose of it in accordance with local laws or as required for the disposal of electrical equipment. This initiative will help preserve save natural resources and improve standards of environmental protection in regard to the treatment of electrical waste.

WELCOME!

Thank you very much for purchase. Please read the instructions carefully before operating the instrument. You can also ask a professional for guidance to make sure you are using the instrument correctly. We will accept no responsibility for any accidents that occur due to incorrect operation.

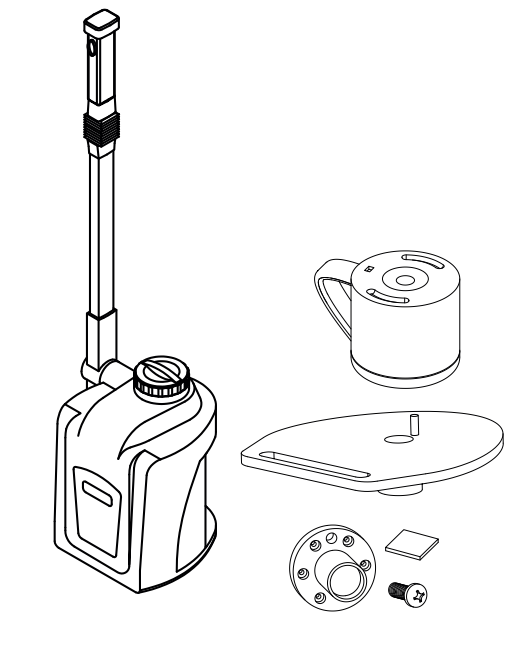
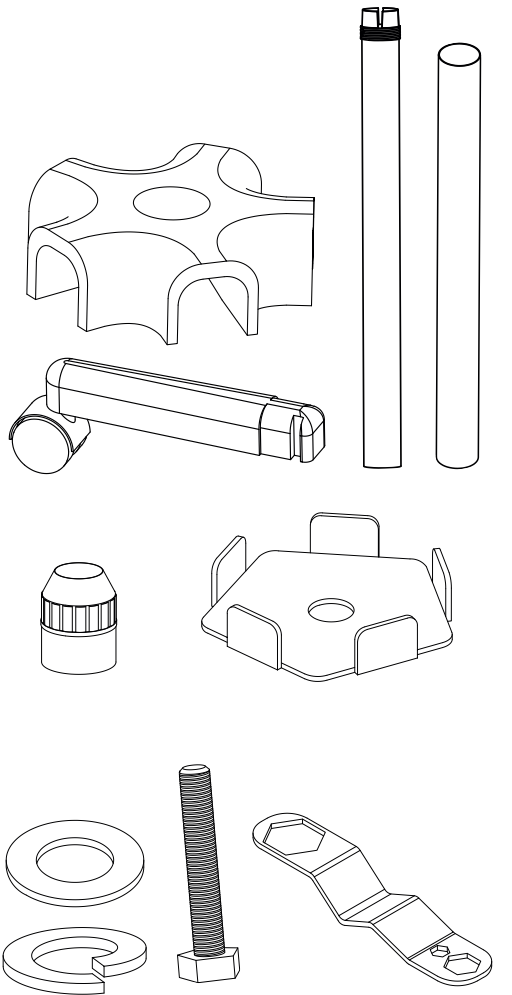
The company reserves the right to amend the details of the instruments with no prior notice. If any mistakes are found in these instructions, please feel free to send us an e-mail informing us so that we can correct them.

PACKAGE CONTENTS

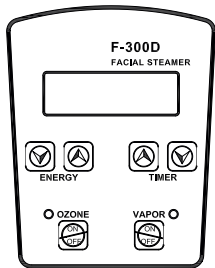
• These components are subject to change without prior notice.

• Appearance of product may differ from the image.

| No. | PRODUCT | REF. | QTY |
|-----|----------------|------|-----|
| 1 | FIVE LEG BASE | - | 1 |
| 2 | WHEEL LEG | - | 5 |
| 3 | STRAIGHT POST | - | 1 |
| 4 | SLIDING BAR | - | 1 |
| 5 | SET SCREW | - | 1 |
| 6 | PRESSING PLATE | - | 1 |
| 7 | FLAT GASKET | - | 1 |
| 8 | SPRING | - | 1 |
| 9 | HEX SCREW | - | 1 |
| 10 | WRENCH | - | 1 |
| 11 | F-300DT | - | 1 |
| 12 | WATER TANK | - | 1 |
| 13 | BRACKET | - | 1 |
| 14 | WOOL FELT | - | 5 |
| 15 | PLATE | - | 1 |
| 16 | SCREW | - | 6 |



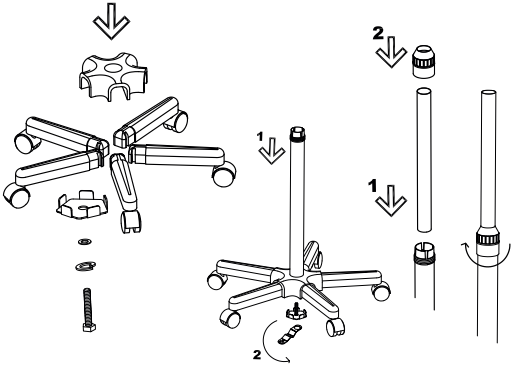
FRONT PANEL



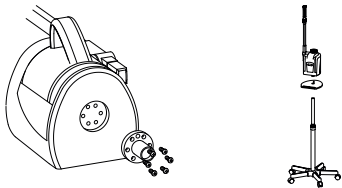
INSTRUCTIONS OF USE

ASSEMBLY

Base assembly

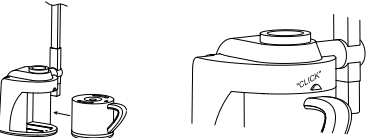


Steamer assembly



Water tank assembly

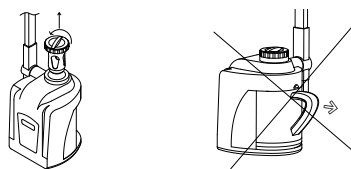
1. Insert the water cup before installing the cup support at the top of the main frame. Make sure that the cup has been inserted correctly by checking the cup-removal button.



2. Now you can screw the cup support in place.



Important note: When removing the water cup, it is very important first to unscrew the cup support from the main frame.



FILLING WITH WATER

1. Remove the cap from the main frame.

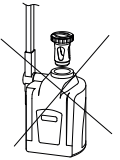


2. Fill the cup with water via the opening.

3. Place the cap in its support, applying enough pressure.

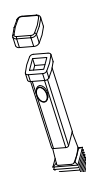
Note: The water level should be between the "MAX" and "MIN" levels marked on the cup.

Important note: Not remove the cap holder to fill the water tank.



FRAGRANCE TREATMENT

• Pour a little essential oil into the balsam case of the spray head.



• 5 parts of wool felt are delivered for replacement.

STARTING TREATMENT

1. Turn on the "POWER" button on the rear panel.

2. Select the desired energy output and operating time by pressing the "ENERGY" and "TIMER" buttons respectively.

3. Press "VAPOR" to begin treatment.

4. Once the steamer starts emitting steam, you can turn on the "OZONE" function:

• The ozone lamp comes on and starts working.

5. Whenever the water level reaches the lower limit, the display shows "NO WATER". Remove the cup and fill the cup with distilled water. Place the cup in the support by applying enough pressure.

6. When preset time ends, the steamer stops working

SUGGESTION OF TREATMENT

| SKIN TYPES | DIST. | TIME |
|-------------------------------------|-------|--------|
| Greasy skin, poor blood circulation | 25cm | 15 min |
| Normal skin | 25cm | 10 min |
| Sensitive skin, dry skin | 30cm | 5 min |
| Capillary vessel expansion | 30cm | 5 min |

CAUTIONS

• When operating the machine, do not point the nozzle at the customer's face until the steam is coming out thinly and evenly.

• The steam should first spray the customer's jaw and then the rest of the face.

FAQ

If the unit works but does not emit steam.

• Check that the herb lid is properly closed.

• Check that the plastic ring is properly placed between the water cup and the main frame.

• Check that the water cup tray is properly tightened.

• Check the water level.

If the unit emits steam mixed with hot water.

1. Clean the water cup with vinegar and rinse with clean water.

2. Fill the water cup with clean water and add 8 to 10 drops of vinegar. Turn on the steamer for the time of one operation (do not use it with a patient!).

3. When the operation time ends, turn off the steamer and rinse the cup with clean water.

4. Use the steamer during the time of 2 whole operations with clean water.

If the display shows the following comments:

• "NO WATER": The water level has reached the minimum line.

• "EXCEEDED": The water level has exceed the maximum line.

• "UNLOCK": There is a leak in the system. Please check if the cup support and the cup are correctly attached.

MAINTENANCE

It is advisable to clean your steamer at least once a week and also to decalcify the water heater element. Please follow the steps below:

1. Once the steamer unit is cold, remove the water cup.

2. Fill the cup with the appropriate decalcification/ water solution and leave it to stand overnight.

3. Remove the water and rinse with clean water to get rid of any residue from the decalcification agent.

4. Refill with water and run the steamer through at least one run cycle in order to remove any remaining residue from the steamer unit.

5. Remove the cup and rinse as before.

6. Refill with water and it is ready for use.

Note: Failure to remove all the decalcification residue may cause the steamer to 'spit'. If this occurs, simply repeat the rinse and refill procedure until the issue is resolved.

TECHNICAL SHEET

| | | |
|----------------------------|--------------------------------------|------------------|
| Adjustments | Upper height limit - arm at 45° (cm) | 140 |
| | Lower height limit - arm at 45° (cm) | 115 |
| | Rotation of arm | 150° |
| | Rotation of the nozzle | 3D |
| | Extension fo the arm (cm) | - |
| Weights and sizes | Packing size (cm) | 30x33x32 |
| | Gross weight (kg) | 18 |
| Water tank | Material | Plastic |
| | Capacity | 1,3 l |
| Working characteristics | Preheat time | 6 min. (approx.) |
| Electrical characteristics | Rated voltage | 220V ~ 240V |
| | Frequency | 50Hz/60Hz |
| | Rated power | 800W |
| Fragrances | Yes | |
| Ozone | Yes | |
| Deposit for herbs | No | |