

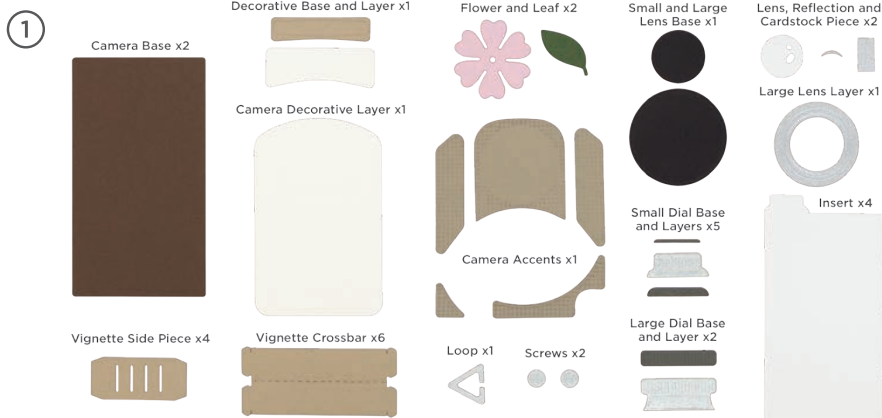
3D Vignette Twin Lens Camera

S6-196

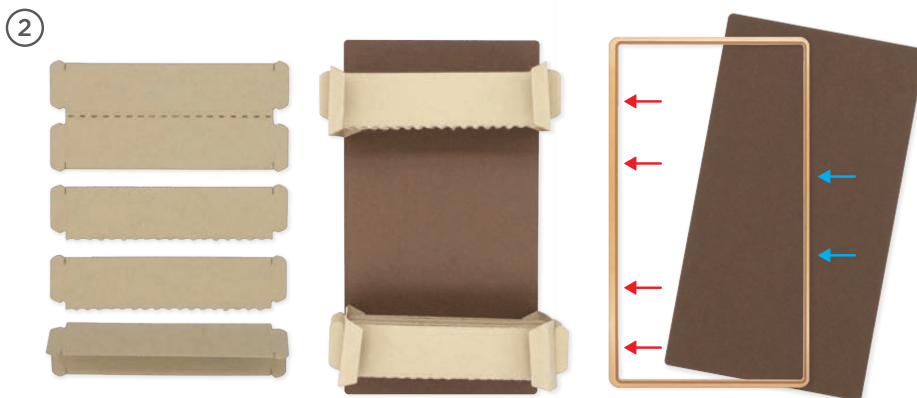
Supplies:

- Platinum™ or Platinum 6™ Machine
- Cardstock in Brown, Kraft, White, Black, Brushed Silver, Cream, Dark Gray, Pink, Green
- Bearly Art Glue PCG02E
- Adhesive Foam
- Basic Crafting Tools
- Option: Color Essentials Gems in color of choice
- Option: Photos

Approximate Finished Size:
1.50 x 3.50 x 5.10 in | 3.8 x 8.9 x 13.0 cm



Cut pieces as shown.

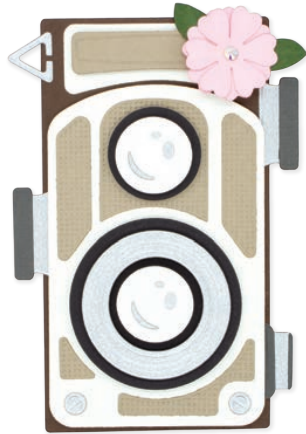


Bend tabs on 3D Vignette side pieces. There are 2 rows of side pieces and crossbars.

Top Row: Separate 2 of the crossbars at the perforations to create 4. Insert crossbars to one side piece, then the other. Bottom Row: Fold 4 crossbars and insert into the second set of Vignette side pieces so that it is a "V"; it will become a pocket for the insert to sit.

There are small tick marks that can be seen on the die for reference. The red arrows show placement of the side Vignette pieces and right side dials; the blue arrows are for placement of the center left dial.

3



Assemble camera front as shown. Some pieces are small. Tweezers are ideal to layer the pieces together. Use small piece of cardstock behind open hole on lenses.

To create more depth, use foam adhesive to the top camera detail layer, camera decorative layer, and lens layers.

Adhere finished camera front to the front tabs of the Vignette side pieces. Make sure that the front and back bases are even so that the camera will sit level.

4



For the inserts, cut out bases.

Tape sentiment dies as shown or as desired and die cut. Trim black cardstock or color of choice to "color" in the sentiments.

Use the remaining inserts for a message or photo.

Add small button/dial bases and layers to each insert.

Place inserts between the top crossbars and sit in "pocket" of bottom row of folded crossbars.

Folds flat but padded envelope is recommended for mailing.