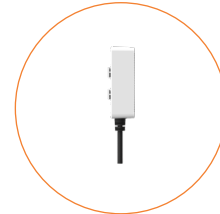
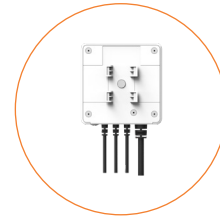
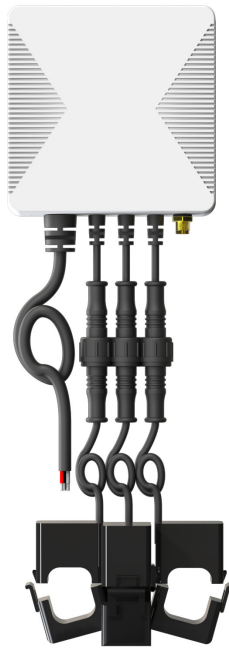


## Products

### – Energy Control & Management

PC321-Z-TY

Single/3-phase Power Clamp



## Description

PC321-Z-TY Power Clamp helps you monitor the amount of electricity usage in your facility by connecting the clamp on to the power cable. It can also measure Voltage, Current, ActivePower, total energy consumption.

## Main Features

- Tuya compliant
- Support Tap-to-Run and automation with other Tuya device
- Single/3 - phase electricity compatible
- Three current transformers for Single phase application
- Measures real-time Voltage, Current, ActivePower and total energy consumption
- Suitable for both residential and commercial application
- Lightweight and easy to install
- External antenna prevents signal from being shielded
- Support OTA

## Main Specifications

| Wireless Connectivity        |   |
|------------------------------|---|
| ZigBee                       | <ul style="list-style-type: none"><li>• 2.4GHz IEEE 802.15.4</li></ul>  |
| ZigBee Profile               | <ul style="list-style-type: none"><li>• ZigBee 3.0</li></ul>  |
| RF Characteristics           | <ul style="list-style-type: none"><li>• Operating frequency: 2.4GHz</li><li>• External antenna</li><li>• Output Power: Up to +20dBm</li></ul>   |
| Physical Specifications      |   |
| Operating Voltage            | <ul style="list-style-type: none"><li>• 100~240 Vac 50/60 Hz</li></ul>  |
| Calibrated Metering Accuracy | <ul style="list-style-type: none"><li>• ≤ 100W Within ±2W</li><li>• &gt;100W Within ±2%</li></ul>   |
| Reporting Cycle              | <ul style="list-style-type: none"><li>• Every 3 seconds</li></ul>   |
| Clamp diameter               | <ul style="list-style-type: none"><li>• 80A (default): 10mm</li><li>• 120A (optional): 16mm</li><li>• 200A (optional): 20mm</li><li>• 300A (optional): 24mm</li><li>• 500A (optional): 36mm</li></ul> |
| Operating environment        | <ul style="list-style-type: none"><li>• Temperature: -20 °C~+55 °C</li><li>• Humidity: ≤ 90% non-condensing</li></ul>   |
| Dimension                    | <ul style="list-style-type: none"><li>• 86(L) x 86(W) x 37(H) mm</li></ul>  |