



WARN® Tabor 8K Winch

Great for Lighter Trucks, Jeeps and SUVs

A full 8,000 lb. pulling capacity makes this winch great for lighter trucks, Jeeps, and SUVs. Quick line speed, durable construction, and WARN dependability ensure this winch will come through time and time again.

- Legendary WARN reliability and performance; 8,000 lb. (3630 kg) capacity
- Low-profile design will fit most trucks and SUVs
- Separate control pack for various mounting options
- Exclusive brake design for superior winching control
- Durable, smooth, and reliable three-stage planetary geartrain
- Series-wound motor for power and fast line speed
- Remote control with 12' (3.7m) lead
- 94' of 5/16" (28.6m of 8mm) diameter wire rope





SPECIFICATIONS

Winch model: Tabor 8K

Part number: PN 88390 (12V)

Rated line pull: 8,000 lbs., (3629 kg) single-line

Motor: 12V DC Series Wound

Electrical controls: Solenoid

Remote Control: Remote switch, 12' (3.7m) lead

Geartrain: 3-Stage Planetary

Gear ratio: 216:1

Clutch (freespooling): Sliding Ring Gear

Brake: Automatic Direct Drive Cone

Drum diameter/Length: 2.5"/9.0" (6.4cm/23cm)

Weight: 80 lbs. (36.3 kgs)

Wire Rope: 94', 5/16" diameter (28.6m, 8mm diam.)

Fairlead: Roller

Recommended Battery: 650 CCA minimum for winching

Battery leads: 25mm² wire, 72" (1.83m)

Finish: Powder coat

12V DC performance specs (first layer of drum)

Line Pull Lbs. (Kg)	Line Speed Ft./min. (M/min.)	Motor Current	Pull by layer: layer/Lbs (Kg)
0	29 (8.8)	69.2 amps	1/8000 (3629)
2000 (910)	14.2 (4.3)	179.2 amps	2/7280 (3302)
4000 (1810)	9.9 (3)	281 amps	3/6670 (3026)
6000 (2720)	7.3 (2.2)	381 amps	4/6230 (2826)
8000 (3630)	4.8 (1.4)	457 amps	

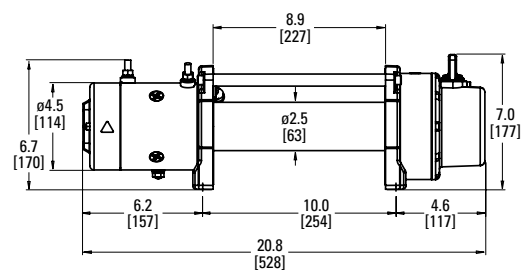
Mounting bolt pattern:

10.0" x 4.5" (254mm x 114.3mm)



Winch dimensions:

20.8" L. x 6.3" D. x 6.97" H.
(528mm L. x 160mm D. x 177mm H.)



Warn Industries, Inc.
12900 S.E. Capps Road,
Clackamas, OR USA 97015-8903



International Sales Support:
+1 503 722 1200
www.warn.com