



INSTALLATION INSTRUCTIONS

Front Plow Mounting Kit

Front Plow Mount Kit: 80360

Application: **Kawasaki Brute Force**

Your safety, and the safety of others, is very important. To help you make informed decisions about safety, we have provided installation and operating instructions and other information on labels and in this guide. This information alerts you to potential hazards that could hurt you or others. It is not possible to warn you about all potential hazards associated with this product, you must use your own good judgment.

CARELESS INSTALLATION AND OPERATION CAN RESULT IN SERIOUS INJURY OR EQUIPMENT DAMAGE. READ AND UNDERSTAND ALL SAFETY PRECAUTIONS AND OPERATING INSTRUCTIONS BEFORE INSTALLING AND OPERATING THIS PRODUCT.

This guide identifies potential hazards and has important safety messages that help you and others avoid personal injury or death. **WARNING** and **CAUTION** are signal words that identify the level of hazard. These signal words mean:

WARNING signals a hazard that *could* cause serious injury or death, if you do not follow recommendations. **CAUTION** signals a hazard that *may* cause minor to moderate injury, if you do not follow recommendations.

This guide uses **NOTICE** to call attention to important mechanical information, and **Note**: to emphasize general information worthy of special attention.

WARNING

INJURY HAZARD

Failure to observe these instructions could lead to severe injury or death.

- ❑ **Always** use extreme caution when drilling on any vehicle. Make sure that all fuel lines, brake lines, electrical wires, and other objects are not punctured or damaged when / if drilling on the vehicle. Thoroughly inspect the area to be drilled (on both sides of material) prior to drilling, and relocate any objects that may be damaged. Failure to inspect the area to be drilled may result in vehicle damage, electrical shock, fire or personal injury.
- ❑ **Always** wear safety glasses when installing this kit. A drilling operation will cause flying metal chips. Flying chips can cause eye injury.
- ❑ **Always** use extreme caution when cutting and trimming during fitting.
- ❑ **Always** remove jewelry and wear eye protection.
- ❑ **Never** lean over battery while making connections.
- ❑ **Never route electrical cables:**
 - Across any sharp edges.
 - Through or near moving parts.
 - Near parts that become hot.
- ❑ **Always** insulate and protect all exposed wiring and electrical terminals.
- ❑ **Always** install terminal boots as directed in installation instructions.
- ❑ **Always** use appropriate and adequate care in lifting components into place.
- ❑ **Always** insure components will remain secure during installation and operation.
- ❑ **Always** tighten all nuts and bolts securely, per the installation and operation.
- ❑ **Always** perform regular inspections and maintenance on the winch, winch mount and related hardware.
- ❑ **Never** operate this **WARN** product with damaged or missing parts.

 Caution
Moving Parts Entanglement Hazard
Failure to observe these instructions could lead to minor or moderate injury.
<input type="checkbox"/> Always take time to fully read and understand the installation and Operations Guide included with this product. <input type="checkbox"/> Never operate this product if you are under 16 years of age. <input type="checkbox"/> Never operate this product when under the influence of drugs, alcohol or medications.
Read installation and operating instructions thoroughly.

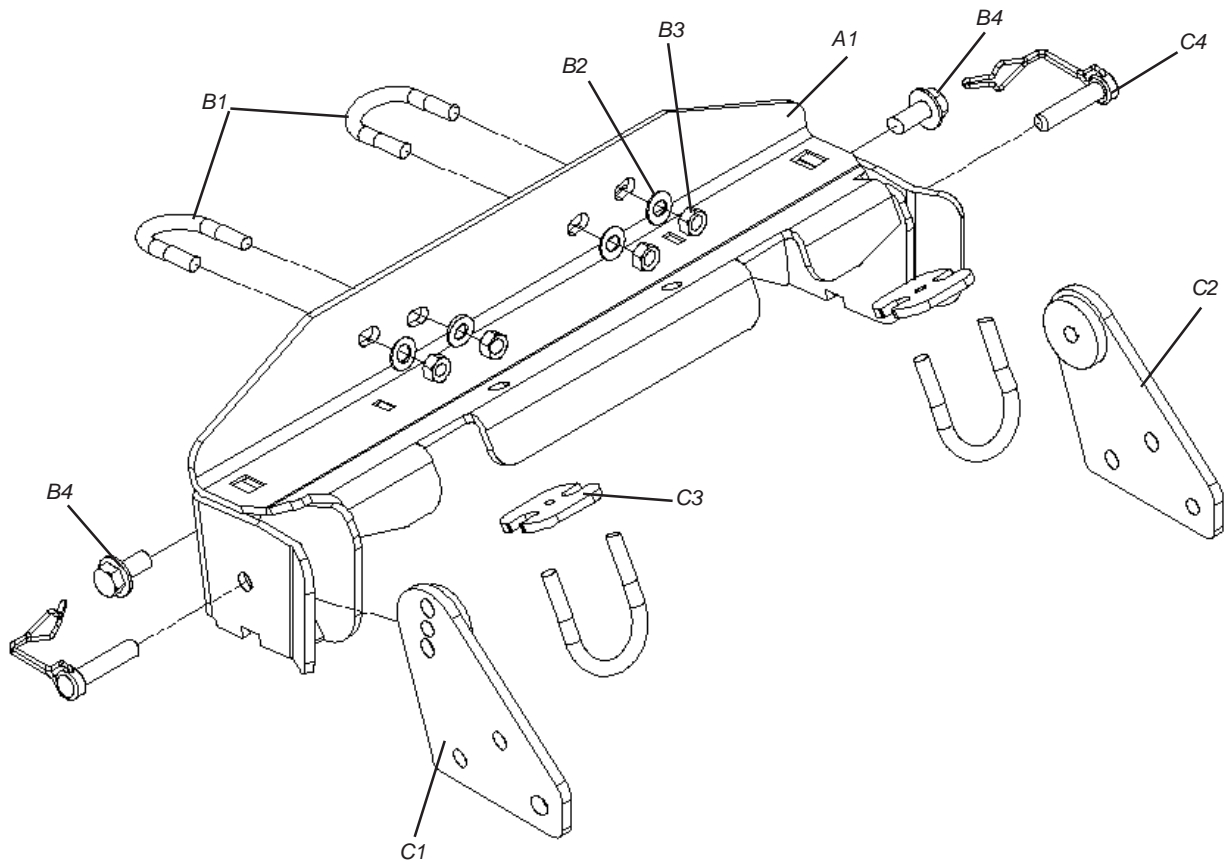
Notice
Equipment Damage
<input type="checkbox"/> Always refer to the Installation and Specification Guide, supplied in the winch kit, for all wiring schematics and specific details on how to wire this WARN product to your vehicle.
Read installation and operating instructions thoroughly.

Table of Contents

I. Parts List 3

II. Tools Required 3

III. Installation 4-6



I. Parts List

<u>Ref</u>	<u>Description</u>	<u>Qty</u>
A1	Plow Mounting Plate	1
B1	5/16-18 x 1 1/8" x 1 3/4" U-bolt	2
B2	5/16" Flat Washer	4
B3	5/16-18 Lock Nut	4
B4	M10-1.25 x 20mm Flange Head	2
C1	Plow Mount Bracket, Right	1
C2	Plow Mount Bracket, Left	1
C3	Plate winch spacer	2
C4	Pin, Plow Retainer	2

II. Tools Required

- Ratchet and Extension
- Sockets: 10mm, 14mm, 1/2"
- Wrenches: 1/2"
- Flat Blade Screwdriver

III. INSTALLATION

1. Loosen the front bottom skid plate by removing the front two 6mm bolts, Figure 2. Keep the 6mm bolts for reinstallation of the skid plate. Skid plate will not be removed from vehicle, only will be rotated down. This will allow room for winch plate installation.
2. Loosen and remove lower bumper bolts M10. New bolts (B4) provided in this kit, Figure 3.
3. Place plow mount in bumper. Align holes on mounting tabs with the holes in bumper and frame. Install M10x20 flange bolts (B4) supplied, but do not tighten at this time. Figure 4.
4. Secure plow mount to frame tubes with 5/16 u-bolts (B1) and washers (B2) and nuts (B3) as shown in Figures 1 & 5.

Tighten all 5/16" fasteners to 12 N-m (9ft.lb.).

Tighten M10 bolts to 27 N-m (20ft.lb.)

Install the plow mounting tabs.

1. The plow mounting tabs supplied in this kit must be secure to the plow in the position shown. (Figure 4b).
2. Loosely install the M10 bolts from the plow kit. Attach the plow to the plow mount and then secure the plow mounting tabs. This will insure the best fit for your vehicle.

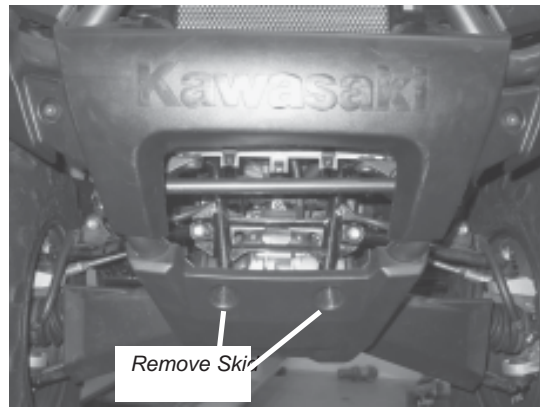


Figure 2 Loosen Front Skid Plate



Figure 3



Figure 4

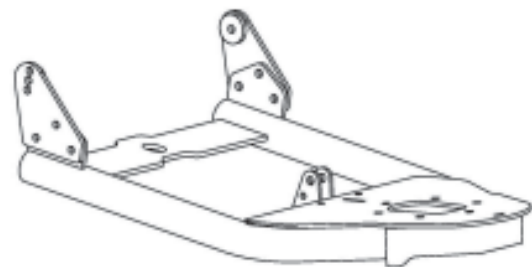


Figure 4b

If installing winch mount:

1. Place winch mount in front of bumper by rotating it sideways and then inserting it through front center of bumper, Figure 6.

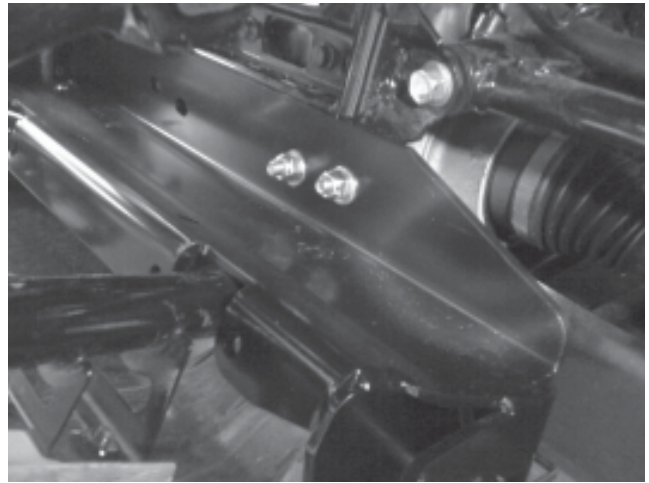


Figure 5

2. Rotate the mounting plate into location, Figure 7. Center the plate between the two front tube guards and align winch plate holes with plow mount holes.



Figure 6

3. Install shim plates (C3) under the front of winch mount. Figure 7.

Attach the mounting plate (A1) by sliding the supplied 5/16" U-bolts (B1) and (B2) around the tubes and through the plate, Figure 8. Fasten the U-bolts with the supplied washers (B3) and nuts (B4), ensuring that the plate sits flush against the front and rear contact surfaces. Tighten all 5/16" fasteners to the recommended torque value of 12 N-m (9 ft-lbs).

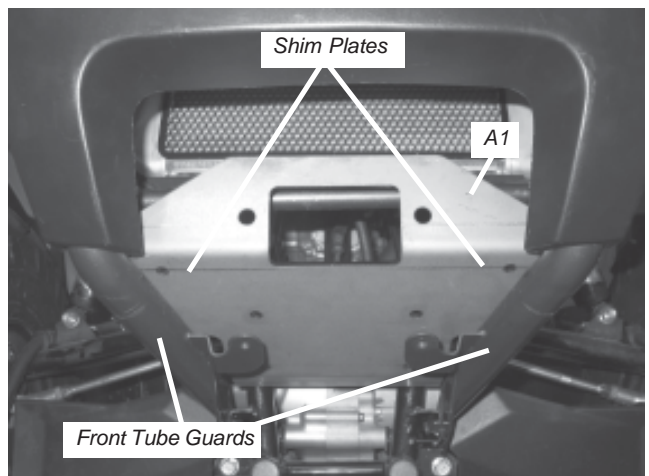


Figure 7 Place Winch Mounting Plate into Location

4. Install winch from the left side of the vehicle, as sitting on the vehicle, Figure 9. Fasten winch with hardware supplied with the winch. Mount the winch so that the motor faces the right side of the vehicle. Tighten the bolts to a recommended torque of 17 N-m (12 ft-lb).

Also attach roller fairlead to the winch mounting plate, Figure 9, using two hardware provided in the winch kit. See instructions included in winch kit for recommended torque.

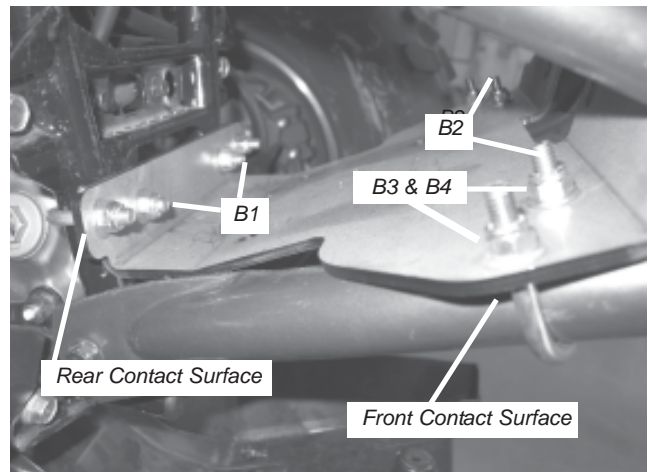


Figure 8 Fasten Winch Mounting Plate

5. Switch the winch clutch to freespool. Manually feed the winch cable through the roller fairlead. Attach the clevis hook to the end cable loop, Figure 10. Reinstall front skid plate with original hardware from step 1 and securely tighten.

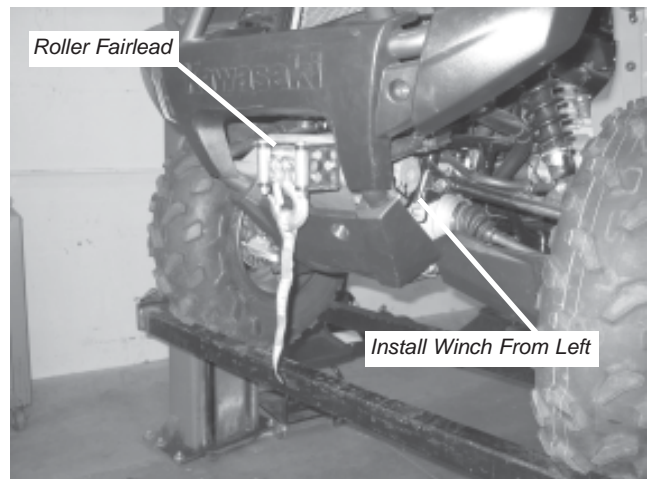


Figure 9 Install Winch and Roller Fairlead

6. Complete the winch installation as described in the winch installation and specification guide that came with the winch.

Plow and winch mount installation is now complete and should look like Figure 10.

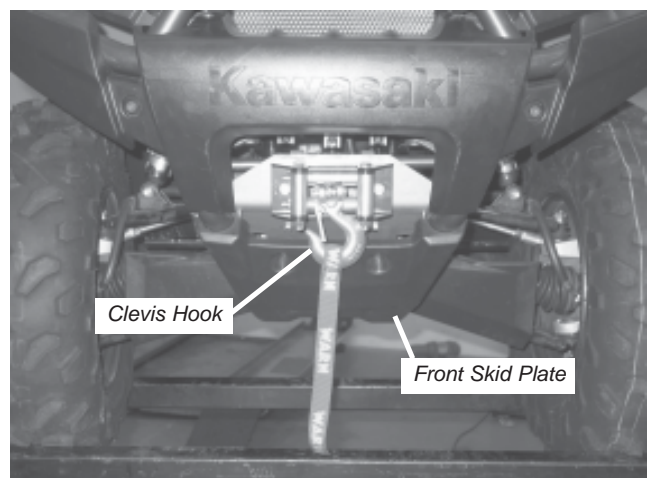


Figure 10 Complete Winch Installation

⚠ WARNING

FAILURE TO SECURELY TIGHTEN ALL BOLTS ON THE WINCH PLATE, WINCH, AND FAIRLEAD CAN RESULT IN PRODUCT FAILURE WHICH MAY RESULT IN VEHICLE DAMAGE AND OPERATOR INJURY OR DEATH. DOUBLE CHECK THAT ALL BOLTS ARE SECURELY TIGHTENED PRIOR TO USE.

⚠ WARNING

AVOID ALL MOVING AND POTENTIALLY HOT COMPONENTS OF ATV WHEN ROUTING ELECTRICAL CABLES. AVOID AREAS WHERE THE WIRING COULD BE PINCHED WHEN COMPONENTS ARE REINSTALLED. FAILURE TO DO SO CAN RESULT IN PRODUCT FAILURE WHICH CAN LEAD TO VEHICLE DAMAGE AND OPERATOR INJURY OR DEATH.

⚠ WARNING

READ THE VEHICLE'S OPERATOR MANUAL, WINCH OPERATOR MANUAL, AND ALL WARNING LABELS PRIOR TO OPERATION OF ATV AND WINCH.

V. MAINTENANCE/CARE

1. Inspect all parts on the winch, winch mount, and related hardware prior to each use. Replace all hardware that appears rusted or deformed.
2. Inspect all nuts and bolts on the winch, winch mount,, and related hardware prior to each use. Tighten all nuts that appear to be loose. Stripped, fractured, or bent bolts or nuts need to be replaced.
3. Check all cables prior to use. Replace cables that look worn or frayed.
4. Check all moving or rotating parts. Remove debris that may inhibit the part from moving freely.

⚠ WARNING

PERFORM REGULAR INSPECTIONS ON THE WINCH, WINCH MOUNT, AND RELATED HARDWARE. NEVER OPERATE THE WINCH WITH DAMAGED OR MISSING PARTS. FAILURE TO FOLLOW THIS WARNING MAY CAUSE VEHICLE DAMAGE AND OPERATOR INJURY OR DEATH.